

If you decide to continue your studies in the area, ELS/Berkeley is within distance to many universities and colleges. Many of these institutions will accept completion of the ELS Intensive English Program in place of the TOEFL® iBT and offer conditional letters of admission to qualified student applicants.



Study English • Explore • Succeed

**Study English at
ELS Language
Centers in
Berkeley, California!**

Schools in Berkeley

- University of California, Berkeley Extension's International Diploma Program
- Berkeley City College

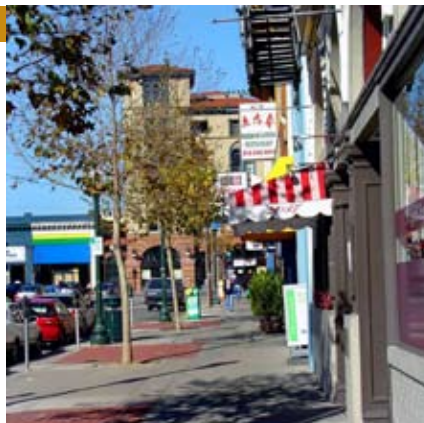
Schools near Berkeley

- Golden Gate University
- Dominican University of California
- Chabot College
- Holy Names University
- Sonoma State University
- Saint Mary's College of California
- Notre Dame de Namur University
- College of Marin
- Santa Rosa Junior College
- Foothill College
- Diablo Valley College
- DeAnza College



The city of Berkeley is a university town located in the heart of the beautiful and culturally diverse San Francisco Bay Area. Berkeley is just a short BART train ride to the globally famous university. With over 30,000 of the world's highest achieving students from all over the world, UC Berkeley adds to the unique and creative spirit of the city. Some popular activities include:

- University of California- Berkeley campus & events
- Telegraph Avenue's cafes, restaurants and shops
- San Francisco downtown and attractions- less than 1 hour away by public transportation
- Muir Woods- Redwood Forests
- Napa and Sonoma Wine country



To learn more visit
www.USAUniversityGuide.org

www.els.edu/berkeley



Study English at ELS Language Centers in Berkeley, California!

Whether you are planning to attend college or university in the US, need English to advance in your career, or simply want to improve your English, ELS can help you reach your English study goals.

ELS/Berkeley offers the following English programs:

Intensive English Program

- Fulfills the English language requirement for admission to over 600 universities and colleges
- 30 lessons per week

Semi-Intensive English Program

- Suitable for students not planning to attend university in the United States
- 20 lessons per week

Preparation Program for the TOEFL® iBT

- 12-week comprehensive TOEFL® iBT preparation program with 30 group lessons per week
- 3 different 4-week modules
- Prepaid seat for the official TOEFL® iBT at the conclusion of the 12-week program

American Explorer Program

- Designed for tourists who would like part-time English study
- 15 lessons per week

ELS GMAT® Prep Program

- Instruction in advanced language skills and GMAT® prep strategies
- 30 group lessons per week
- Optional math tutoring available

Program Features

- 12 proficiency levels from Beginning to Masters levels (3 Masters levels for GMAT® prep)
- Classes Monday to Friday
- 4-week sessions, with each session the equivalent of 1 ELS proficiency level
- 13 start dates annually

To learn more about our English programs, visit www.els.edu/programs

STUDY ENGLISH • EXPLORE • SUCCEED



Choose ELS Language Centers!

Experience: For over 45 years ELS Language Centers (ELS) has helped over 1,000,000 international students from 140 countries around the world learn English.

Location: ELS/Berkeley is located in Hillside Hall, a residence and classroom facility, which houses both ELS students and students from the University of California- Berkeley. Many of the world's greatest scholars have studied in Berkeley, and students can take advantage of many libraries, cafes, bookstores and festivals. ELS/Berkeley is in the San Francisco Bay Area, with beautiful weather, good public transportation, and easy access to San Francisco, San Jose and Marin County.

Housing: ELS students are housed in on-campus dormitories and off-campus apartments. Students may also choose to live with American families close to the college.

Facility Use: ELS students have access to many of the UC-Berkeley's campus facilities, including the library, basketball courts, indoor and outdoor swimming pool and volleyball courts.

Activities: ELS plans a wide range of activities for students, from sightseeing to visits to local attractions, center parties, and more. ELS/Berkeley students can enjoy the city's many cafes, shops and restaurants, as well as UC-Berkeley's campus events.

Testing: ELS/Berkeley is an authorized TOEFL® iBT testing center

ELS Language Centers

Berkeley Center

2425 Prospect Street

Berkeley, CA 94704 USA

Tel: 1.510.845.0201

Fax: 1.510.845.4323

Email: ber@els.edu

www.els.edu/berkeley